

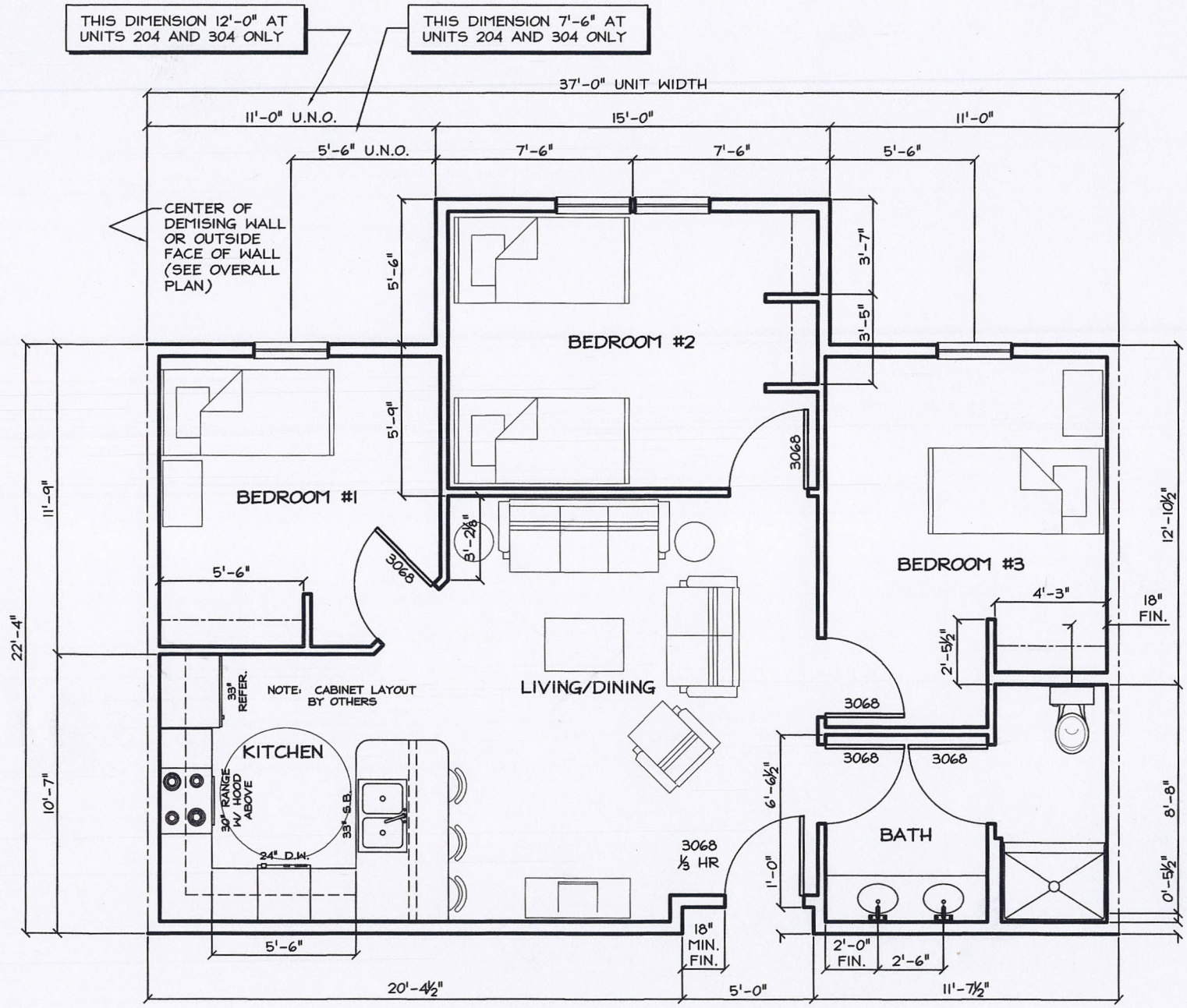
10/6/14

JSN
Associates, Inc.
 Consulting Structural Engineers
 One Autumn Street
 Portsmouth, NH 03801
 (603) 433 - 8639
 Fax: (603) 431 - 2811

Ballard Building
 1 Madbury Road
 Durham, NH

Owner:
 Henderson Properties
 1 Main St.
 Durham, NH

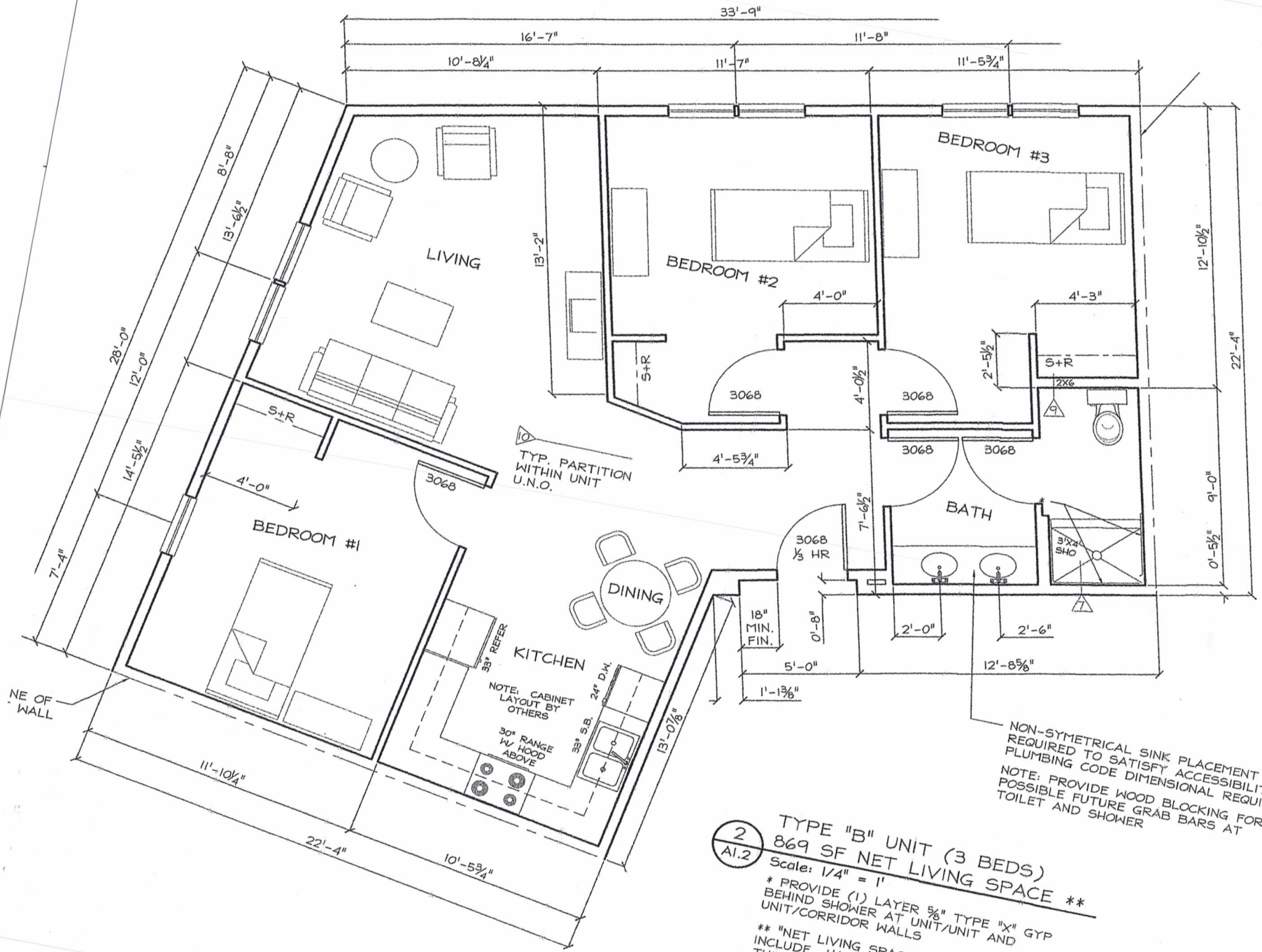
Architect:
 Nick Isaak
 35 Oyster River Rd.
 Durham, NH



Drawn By:	RB
Date:	10-03-14
Scale:	AS NOTED
File:	
Checked By:	
Approved By:	
Revisions	

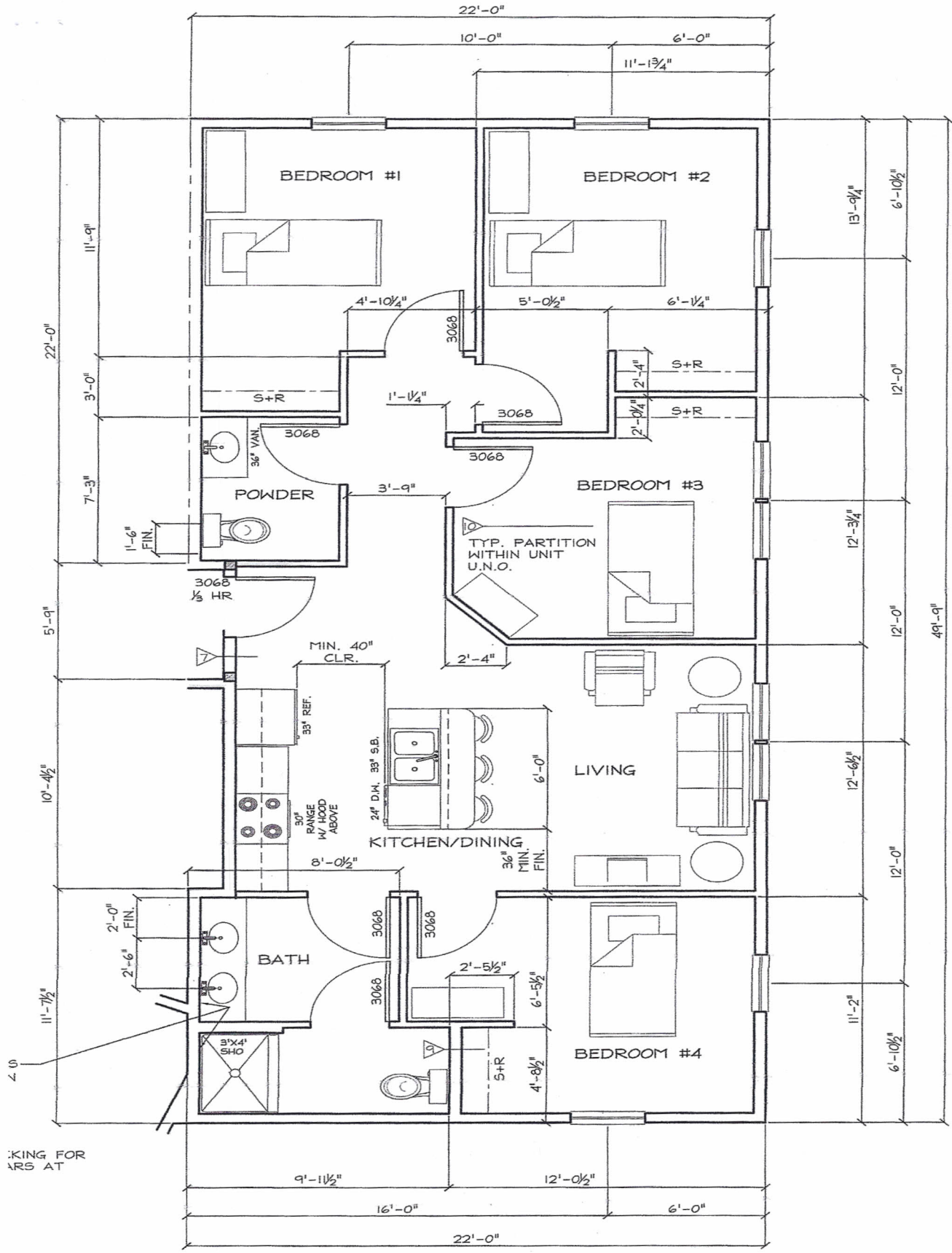
TYPE "A" UNIT (3 BEDS)
803 SF NET LIVING SPACE **
 ASK1.0 Scale: 3/16" = 1'

Revised "A" Unit
ASK-1.0



NON-SYMETRICAL SINK PLACEMENT
 REQUIRED TO SATISFY ACCESSIBILITY,
 PLUMBING CODE DIMENSIONAL REQUIRET
 NOTE: PROVIDE WOOD BLOCKING FOR
 TOILET AND SHOWER

2 TYPE "B" UNIT (3 BEDS)
 A1.2 869 SF NET LIVING SPACE **
 Scale: 1/4" = 1'
 * PROVIDE (1) LAYER 5/8" TYPE "X" GYP
 BEHIND SHOWER AT UNIT/UNIT AND
 UNIT/CORRIDOR WALLS
 ** "NET LIVING SPACE" DOES NOT
 INCLUDE HALLWAYS OR WALL
 THICKNESSES.

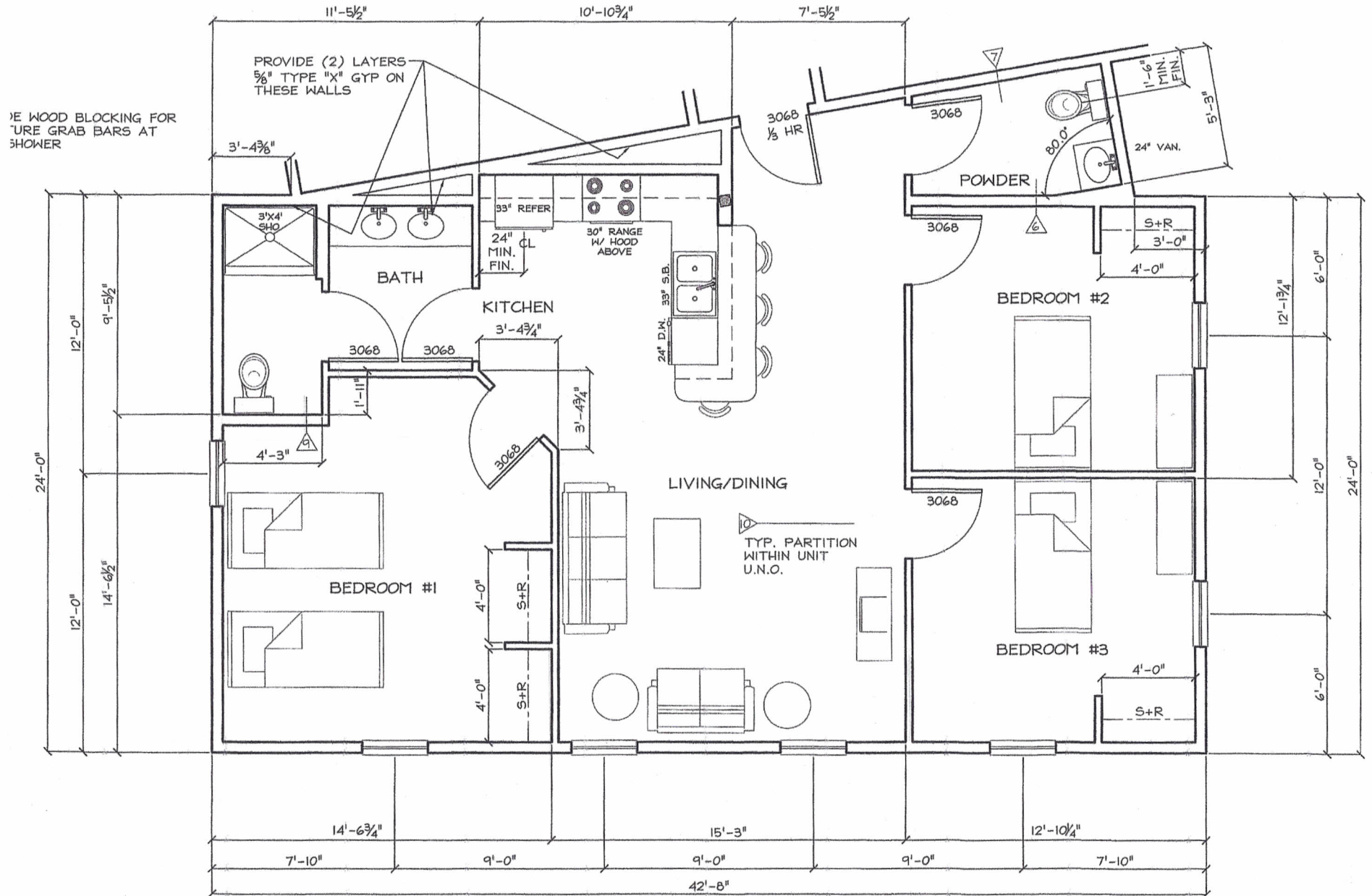


AI.3

TYPE "C" UNIT (4 BEDS)
877 SF NET LIVING SPACE

Scale: 1/4" = 1'

"NET LIVING SPACE" DOES NOT INCLUDE HALLWAYS OR WALL THICKNESSES.



TYPE "D" UNIT (4 BEDS)
 1006 SF NET LIVING SPACE

2
 AI.3

Scale: 1/4" = 1'

"NET LIVING SPACE" DOES NOT INCLUDE HALLWAYS OR WALL THICKNESSES (HALLWAYS N/A IN THIS UNIT).

PROVIDE (2) LAYERS 5/8" TYPE "X" GYP ON

3'-0 1/2"
 1'-6" MIN. FIN.

